



Basso Continuo

Johann Georg Zechner  
(1716 - 1778)

Missa  
quia fecit mihi magna

U.Ze.016

# Kyrie

## Adagio



2 112



117



123



129



134



140



145



150

156 **Adagio**163 **Alla breve**

171



180



189



194



11

## Missa quia fecit mihi magna - J.G.Zechner

208

3



216



225



234



244



256



265



273



288



297



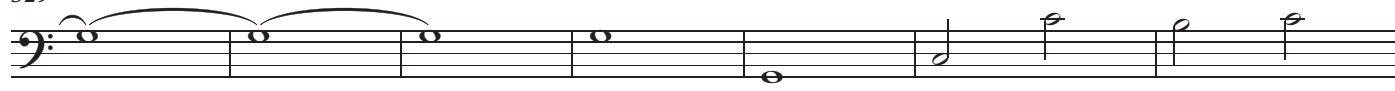
305



319



329



336



## Johann Georg Zechner ( 1716-1778 )

ist ein in Gleisdorf in der Oststeiermark geborener Barockkomponist. Schon seit 1978 bemüht sich Josef Hofer, damals noch Chorleiter des Johann Joseph-Fux-Chores (jetzt Chorforum), die Werke dieses großen Komponisten der Vergangenheit zu entreißen.

Bis in die 1990-er Jahre wurden immer wieder a-cappella Motetten und auch die große Orgelso-lomesse in C von Zechner in verschiedenen Konzerten zum Erklingen gebracht.

Im Jahre 2016, zu seinem 300sten Geburtstag, wurde begonnen, die Werke des berühmten Soh-nes von Gleisdorf wiederzubeleben. Seither wird jährlich im Rahmen eines Barockkonzertes ein neuverlegtes Werk von J.G.Zechner zur Erstaufführung gebracht. Selbstverständlich sind auch bereits verlegte Werke wie auch Zeitgenossen im Rahmen dieser Konzerte zu hören.

Tonträger mit Livemitschnitten sind vorhanden und beim Verein "Sakralkunst Oststeiermark" (<https://www.sakralkunst.at/cd/>) erhältlich.

Wenn Sie Interesse an Zechner (Werke, Noten etc.) haben oder bei der Suche nach weiterem Material behilflich sein können, melden Sie sich bitte unter: [peter@unger-art.com](mailto:peter@unger-art.com) oder tel: 0664/1009288 bei mir.

Weitere Werke von Zechner finden Sie unter <https://peter.unger-art.com/noten>.

Peter Unger - April 2019

Gloria

# Gloria

**Allegro**

Tutti



**Andante**

Solo



66



72



77



82



88



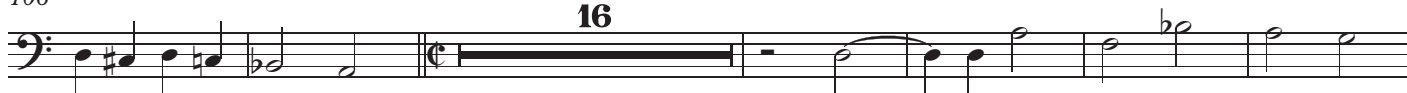
94



99

**Adagio**

106

**Alla breve****16**

128



137



147



155



164



173



181

**Andante**

190



196



201



206



211



216



222





228



234 **Adagio Allegro**



240 **Adagio Allegro**



245 **Adagio Allegro**



251



256 **Adagio Andante**



261



266



271



276



281



285



289 **Adagio**



[illegible][illegible][illegible]

The bass line of 'The Rose Tree' is written on a single staff with a bass clef. It begins with a treble clef and a key signature of one flat (B-flat). The melody consists of a series of eighth and sixteenth notes, with a final measure containing a whole note. The notation includes a repeat sign and a final cadence.

[illegible][illegible]

The bass line of 'The Rose Tree' is written on a single staff. It begins with a treble clef and a key signature of one sharp (F#). The melody starts with a half note G4, followed by a quarter note A4, then a quarter note B4. This is followed by a quarter rest, then a quarter note G4, and a quarter note F#4. The melody continues with a quarter note E4, a quarter note D4, and a quarter note C4. The piece ends with a double bar line and repeat dots.

[illegible]

Musical notation for the bass line of 'The Rose Tree'. The key signature has one sharp (F#). The melody is written on a single staff with a bass clef. It begins with a half note G2, followed by quarter notes A2, B2, and C3. The next measure contains a half note D3, followed by quarter notes E3, F#3, and G3. The third measure has a half note A3, followed by quarter notes B3, C4, and D4. The fourth measure consists of a half note E4. The fifth measure is a whole note F#4. The sixth measure has a half note G4, followed by quarter notes A4, B4, and C5. The seventh measure contains a half note D5, followed by quarter notes E5, F#5, and G5. The eighth measure has a half note A5, followed by quarter notes B5, C6, and D6. The ninth measure consists of a half note E6. The tenth measure is a whole note F#6. The eleventh measure has a half note G6, followed by quarter notes A6, B6, and C7. The twelfth measure contains a half note D7, followed by quarter notes E7, F#7, and G7. The thirteenth measure has a half note A7, followed by quarter notes B7, C8, and D8. The fourteenth measure consists of a half note E8. The fifteenth measure is a whole note F#8. The sixteenth measure has a half note G8, followed by quarter notes A8, B8, and C9. The seventeenth measure contains a half note D9, followed by quarter notes E9, F#9, and G9. The eighteenth measure has a half note A9, followed by quarter notes B9, C10, and D10. The nineteenth measure consists of a half note E10. The twentieth measure is a whole note F#10. The twenty-first measure has a half note G10, followed by quarter notes A10, B10, and C11. The twenty-second measure contains a half note D11, followed by quarter notes E11, F#11, and G11. The twenty-third measure has a half note A11, followed by quarter notes B11, C12, and D12. The twenty-fourth measure consists of a half note E12. The twenty-fifth measure is a whole note F#12. The twenty-sixth measure has a half note G12, followed by quarter notes A12, B12, and C13. The twenty-seventh measure contains a half note D13, followed by quarter notes E13, F#13, and G13. The twenty-eighth measure has a half note A13, followed by quarter notes B13, C14, and D14. The twenty-ninth measure consists of a half note E14. The thirtieth measure is a whole note F#14. The thirty-first measure has a half note G14, followed by quarter notes A14, B14, and C15. The thirty-second measure contains a half note D15, followed by quarter notes E15, F#15, and G15. The thirty-third measure has a half note A15, followed by quarter notes B15, C16, and D16. The thirty-fourth measure consists of a half note E16. The thirty-fifth measure is a whole note F#16. The thirty-sixth measure has a half note G16, followed by quarter notes A16, B16, and C17. The thirty-seventh measure contains a half note D17, followed by quarter notes E17, F#17, and G17. The thirty-eighth measure has a half note A17, followed by quarter notes B17, C18, and D18. The thirty-ninth measure consists of a half note E18. The fortieth measure is a whole note F#18. The forty-first measure has a half note G18, followed by quarter notes A18, B18, and C19. The forty-second measure contains a half note D19, followed by quarter notes E19, F#19, and G19. The forty-third measure has a half note A19, followed by quarter notes B19, C20, and D20. The forty-fourth measure consists of a half note E20. The forty-fifth measure is a whole note F#20. The forty-sixth measure has a half note G20, followed by quarter notes A20, B20, and C21. The forty-seventh measure contains a half note D21, followed by quarter notes E21, F#21, and G21. The forty-eighth measure has a half note A21, followed by quarter notes B21, C22, and D22. The forty-ninth measure consists of a half note E22. The fiftieth measure is a whole note F#22. The fifty-first measure has a half note G22, followed by quarter notes A22, B22, and C23. The fifty-second measure contains a half note D23, followed by quarter notes E23, F#23, and G23. The fifty-third measure has a half note A23, followed by quarter notes B23, C24, and D24. The fifty-fourth measure consists of a half note E24. The fifty-fifth measure is a whole note F#24. The fifty-sixth measure has a half note G24, followed by quarter notes A24, B24, and C25. The fifty-seventh measure contains a half note D25, followed by quarter notes E25, F#25, and G25. The fifty-eighth measure has a half note A25, followed by quarter notes B25, C26, and D26. The fifty-ninth measure consists of a half note E26. The sixtieth measure is a whole note F#26. The sixty-first measure has a half note G26, followed by quarter notes A26, B26, and C27. The sixty-second measure contains a half note D27, followed by quarter notes E27, F#27, and G27. The sixty-third measure has a half note A27, followed by quarter notes B27, C28, and D28. The sixty-fourth measure consists of a half note E28. The sixty-fifth measure is a whole note F#28. The sixty-sixth measure has a half note G28, followed by quarter notes A28, B28, and C29. The sixty-seventh measure contains a half note D29, followed by quarter notes E29, F#29, and G29. The sixty-eighth measure has a half note A29, followed by quarter notes B29, C30, and D30. The sixty-ninth measure consists of a half note E30. The seventieth measure is a whole note F#30. The seventy-first measure has a half note G30, followed by quarter notes A30, B30, and C31. The seventy-second measure contains a half note D31, followed by quarter notes E31, F#31, and G31. The seventy-third measure has a half note A31, followed by quarter notes B31, C32, and D32. The seventy-fourth measure consists of a half note E32. The seventy-fifth measure is a whole note F#32. The seventy-sixth measure has a half note G32, followed by quarter notes A32, B32, and C33. The seventy-seventh measure contains a half note D33, followed by quarter notes E33, F#33, and G33. The seventy-eighth measure has a half note A33, followed by quarter notes B33, C34, and D34. The seventy-ninth measure consists of a half note E34. The eightieth measure is a whole note F#34. The eighty-first measure has a half note G34, followed by quarter notes A34, B34, and C35. The eighty-second measure contains a half note D35, followed by quarter notes E35, F#35, and G35. The eighty-third measure has a half note A35, followed by quarter notes B35, C36, and D36. The eighty-fourth measure consists of a half note E36. The eighty-fifth measure is a whole note F#36. The eighty-sixth measure has a half note G36, followed by quarter notes A36, B36, and C37. The eighty-seventh measure contains a half note D37, followed by quarter notes E37, F#37, and G37. The eighty-eighth measure has a half note A37, followed by quarter notes B37, C38, and D38. The eighty-ninth measure consists of a half note E38. The ninetieth measure is a whole note F#38. The hundredth measure has a half note G38, followed by quarter notes A38, B38, and C39. The hundred-first measure contains a half note D39, followed by quarter notes E39, F#39, and G39. The hundred-second measure has a half note A39, followed by quarter notes B39, C40, and D40. The hundred-third measure consists of a half note E40. The hundred-fourth measure is a whole note F#40. The hundred-fifth measure has a half note G40, followed by quarter notes A40, B40, and C41. The hundred-sixth measure contains a half note D41, followed by quarter notes E41, F#41, and G41. The hundred-seventh measure has a half note A41, followed by quarter notes B41, C42, and D42. The hundred-eighth measure consists of a half note E42. The hundred-ninth measure is a whole note F#42. The hundred-tieth measure has a half note G42, followed by quarter notes A42, B42, and C43. The hundred-first measure contains a half note D43, followed by quarter notes E43, F#43, and G43. The hundred-second measure has a half note A43, followed by quarter notes B43, C44, and D44. The hundred-third measure consists of a half note E44. The hundred-fourth measure is a whole note F#44. The hundred-fifth measure has a half note G44, followed by quarter notes A44, B44, and C45. The hundred-sixth measure contains a half note D45, followed by quarter notes E45, F#45, and G45. The hundred-seventh measure has a half note A45, followed by quarter notes B45, C46, and D46. The hundred-eighth measure consists of a half note E46. The hundred-ninth measure is a whole note F#46. The hundred-tieth measure has a half note G46, followed by quarter notes A46, B46, and C47. The hundred-first measure contains a half note D47, followed by quarter notes E47, F#47, and G47. The hundred-second measure has a half note A47, followed by quarter notes B47, C48, and D48. The hundred-third measure consists of a half note E48. The hundred-fourth measure is a whole note F#48. The hundred-fifth measure has a half note G48, followed by quarter notes A48, B48, and C49. The hundred-sixth measure contains a half note D49, followed by quarter notes E49, F#49, and G49. The hundred-seventh measure has a half note A49, followed by quarter notes B49, C50, and D50. The hundred-eighth measure consists of a half note E50. The hundred-ninth measure is a whole note F#50. The hundred-tieth measure has a half note G50, followed by quarter notes A50, B50, and C51. The hundred-first measure contains a half note D51, followed by quarter notes E51, F#51, and G51. The hundred-second measure has a half note A51, followed by quarter notes B51, C52, and D52. The hundred-third measure consists of a half note E52. The hundred-fourth measure is a whole note F#52. The hundred-fifth measure has a half note G52, followed by quarter notes A52, B52, and C53. The hundred-sixth measure contains a half note D53, followed by quarter notes E53, F#53, and G53. The hundred-seventh measure has a half note A53, followed by quarter notes B53, C54, and D54. The hundred-eighth measure consists of a half note E54. The hundred-ninth measure is a whole note F#54. The hundred-tieth measure has a half note G54, followed by quarter notes A54, B54, and C55. The hundred-first measure contains a half note D55, followed by quarter notes E55, F#55, and G55. The hundred-second measure has a half note A55, followed by quarter notes B55, C56, and D56. The hundred-third measure consists of a half note E56. The hundred-fourth measure is a whole note F#56. The hundred-fifth measure has a half note G56, followed by quarter notes A56, B56, and C57. The hundred-sixth measure contains a half note D57, followed by quarter notes E57, F#57, and G57. The hundred-seventh measure has a half note A57, followed by quarter notes B57, C58, and D58. The hundred-eighth measure consists of a half note E58. The hundred-ninth measure is a whole note F#58. The hundred-tieth measure has a half note G58, followed by quarter notes A58, B58, and C59. The hundred-first measure contains a half note D59, followed by quarter notes E59, F#59, and G59. The hundred-second measure has a half note A59, followed by quarter notes B59, C60, and D60. The hundred-third measure consists of a half note E60. The hundred-fourth measure is a whole note F#60. The hundred-fifth measure has a half note G60, followed by quarter notes A60, B60, and C61. The hundred-sixth measure contains a half note D61, followed by quarter notes E61, F#61, and G61. The hundred-seventh measure has a half note A61, followed by quarter notes B61, C62, and D62. The hundred-eighth measure consists of a half note E62. The hundred-ninth measure is a whole note F#62. The hundred-tieth measure has a half note G62, followed by quarter notes A62, B62, and C63. The hundred-first measure contains a half note D63, followed by quarter notes E63, F#63, and G63. The hundred-second measure has a half note A63, followed by quarter notes B63, C64, and D64. The hundred-third measure consists of a half note E64. The hundred-fourth measure is a whole note F#64. The hundred-fifth measure has a half note G64, followed by quarter notes A64, B64, and C65. The hundred-sixth measure contains a half note D65, followed by quarter notes E65, F#65, and G65. The hundred-seventh measure has a half note A65, followed by quarter notes B65, C66, and D66. The hundred-eighth measure consists of a half note E66. The hundred-ninth measure is a whole note F#66. The hundred-tieth measure has a half note G66, followed by quarter notes A66, B66, and C67. The hundred-first measure contains a half note D67, followed by quarter notes E67, F#67, and G67. The hundred-second measure has a half note A67, followed by quarter notes B67, C68, and D68. The hundred-third measure consists of a half note E68. The hundred-fourth measure is a whole note F#68. The hundred-fifth measure has a half note G68, followed by quarter notes A68, B68, and C69. The hundred-sixth measure contains a half note D69, followed by quarter notes E69, F#69, and G69. The hundred-seventh measure has a half note A69, followed by quarter notes B69, C70, and D70. The hundred-eighth measure consists of a half note E70. The hundred-ninth measure is a whole note F#70. The hundred-tieth measure has a half note G70, followed by quarter notes A70, B70, and C71. The hundred-first measure contains a half note D71, followed by quarter notes E71, F#71, and G71. The hundred-second measure has a half note A71, followed by quarter notes B71, C72, and D72. The hundred-third measure consists of a half note E72. The hundred-fourth measure is a whole note F#7

Musical notation for the bass line of 'The Rose Tree'. The notation is on a single staff with a bass clef. It consists of several measures of music, including eighth and sixteenth notes, and rests.

The bass line of 'The Rose Tree' is written on a single staff in bass clef. It consists of 12 measures. The notes are: G2, A2, B2, C3, D3, E3, F3, G3, A3, B3, C4, D4. The rhythm is: quarter, quarter, quarter, quarter, quarter, quarter, quarter, quarter, quarter, quarter, quarter, quarter. There is a key signature change from one sharp (F#) to no sharps or flats (C major) after the 6th measure.

Musical notation for the bass line of 'The Rose Tree'. The key signature has one flat (B-flat). The melody consists of eighth and quarter notes, with some beamed eighth notes. The notes are: G2, A2, Bb2, A2, G2, F2, E2, D2, C2, Bb1, A1, G1, F1, E1, D1, C1, Bb0, A0, G0, F0, E0, D0, C0, Bb-1, A-1, G-1, F-1, E-1, D-1, C-1, Bb-2, A-2, G-2, F-2, E-2, D-2, C-2, Bb-3, A-3, G-3, F-3, E-3, D-3, C-3, Bb-4, A-4, G-4, F-4, E-4, D-4, C-4, Bb-5, A-5, G-5, F-5, E-5, D-5, C-5, Bb-6, A-6, G-6, F-6, E-6, D-6, C-6, Bb-7, A-7, G-7, F-7, E-7, D-7, C-7, Bb-8, A-8, G-8, F-8, E-8, D-8, C-8, Bb-9, A-9, G-9, F-9, E-9, D-9, C-9, Bb-10, A-10, G-10, F-10, E-10, D-10, C-10, Bb-11, A-11, G-11, F-11, E-11, D-11, C-11, Bb-12, A-12, G-12, F-12, E-12, D-12, C-12, Bb-13, A-13, G-13, F-13, E-13, D-13, C-13, Bb-14, A-14, G-14, F-14, E-14, D-14, C-14, Bb-15, A-15, G-15, F-15, E-15, D-15, C-15, Bb-16, A-16, G-16, F-16, E-16, D-16, C-16, Bb-17, A-17, G-17, F-17, E-17, D-17, C-17, Bb-18, A-18, G-18, F-18, E-18, D-18, C-18, Bb-19, A-19, G-19, F-19, E-19, D-19, C-19, Bb-20, A-20, G-20, F-20, E-20, D-20, C-20, Bb-21, A-21, G-21, F-21, E-21, D-21, C-21, Bb-22, A-22, G-22, F-22, E-22, D-22, C-22, Bb-23, A-23, G-23, F-23, E-23, D-23, C-23, Bb-24, A-24, G-24, F-24, E-24, D-24, C-24, Bb-25, A-25, G-25, F-25, E-25, D-25, C-25, Bb-26, A-26, G-26, F-26, E-26, D-26, C-26, Bb-27, A-27, G-27, F-27, E-27, D-27, C-27, Bb-28, A-28, G-28, F-28, E-28, D-28, C-28, Bb-29, A-29, G-29, F-29, E-29, D-29, C-29, Bb-30, A-30, G-30, F-30, E-30, D-30, C-30, Bb-31, A-31, G-31, F-31, E-31, D-31, C-31, Bb-32, A-32, G-32, F-32, E-32, D-32, C-32, Bb-33, A-33, G-33, F-33, E-33, D-33, C-33, Bb-34, A-34, G-34, F-34, E-34, D-34, C-34, Bb-35, A-35, G-35, F-35, E-35, D-35, C-35, Bb-36, A-36, G-36, F-36, E-36, D-36, C-36, Bb-37, A-37, G-37, F-37, E-37, D-37, C-37, Bb-38, A-38, G-38, F-38, E-38, D-38, C-38, Bb-39, A-39, G-39, F-39, E-39, D-39, C-39, Bb-40, A-40, G-40, F-40, E-40, D-40, C-40, Bb-41, A-41, G-41, F-41, E-41, D-41, C-41, Bb-42, A-42, G-42, F-42, E-42, D-42, C-42, Bb-43, A-43, G-43, F-43, E-43, D-43, C-43, Bb-44, A-44, G-44, F-44, E-44, D-44, C-44, Bb-45, A-45, G-45, F-45, E-45, D-45, C-45, Bb-46, A-46, G-46, F-46, E-46, D-46, C-46, Bb-47, A-47, G-47, F-47, E-47, D-47, C-47, Bb-48, A-48, G-48, F-48, E-48, D-48, C-48, Bb-49, A-49, G-49, F-49, E-49, D-49, C-49, Bb-50, A-50, G-50, F-50, E-50, D-50, C-50, Bb-51, A-51, G-51, F-51, E-51, D-51, C-51, Bb-52, A-52, G-52, F-52, E-52, D-52, C-52, Bb-53, A-53, G-53, F-53, E-53, D-53, C-53, Bb-54, A-54, G-54, F-54, E-54, D-54, C-54, Bb-55, A-55, G-55, F-55, E-55, D-55, C-55, Bb-56, A-56, G-56, F-56, E-56, D-56, C-56, Bb-57, A-57, G-57, F-57, E-57, D-57, C-57, Bb-58, A-58, G-58, F-58, E-58, D-58, C-58, Bb-59, A-59, G-59, F-59, E-59, D-59, C-59, Bb-60, A-60, G-60, F-60, E-60, D-60, C-60, Bb-61, A-61, G-61, F-61, E-61, D-61, C-61, Bb-62, A-62, G-62, F-62, E-62, D-62, C-62, Bb-63, A-63, G-63, F-63, E-63, D-63, C-63, Bb-64, A-64, G-64, F-64, E-64, D-64, C-64, Bb-65, A-65, G-65, F-65, E-65, D-65, C-65, Bb-66, A-66, G-66, F-66, E-66, D-66, C-66, Bb-67, A-67, G-67, F-67, E-67, D-67, C-67, Bb-68, A-68, G-68, F-68, E-68, D-68, C-68, Bb-69, A-69, G-69, F-69, E-69, D-69, C-69, Bb-70, A-70, G-70, F-70, E-70, D-70, C-70, Bb-71, A-71, G-71, F-71, E-71, D-71, C-71, Bb-72, A-72, G-72, F-72, E-72, D-72, C-72, Bb-73, A-73, G-73, F-73, E-73, D-73, C-73, Bb-74, A-74, G-74, F-74, E-74, D-74, C-74, Bb-75, A-75, G-75, F-75, E-75, D-75, C-75, Bb-76, A-76, G-76, F-76, E-76, D-76, C-76, Bb-77, A-77, G-77, F-77, E-77, D-77, C-77, Bb-78, A-78, G-78, F-78, E-78, D-78, C-78, Bb-79, A-79, G-79, F-79, E-79, D-79, C-79, Bb-80, A-80, G-80, F-80, E-80, D-80, C-80, Bb-81, A-81, G-81, F-81, E-81, D-81, C-81, Bb-82, A-82, G-82, F-82, E-82, D-82, C-82, Bb-83, A-83, G-83, F-83, E-83, D-83, C-83, Bb-84, A-84, G-84, F-84, E-84, D-84, C-84, Bb-85, A-85, G-85, F-85, E-85, D-85, C-85, Bb-86, A-86, G-86, F-86, E-86, D-86, C-86, Bb-87, A-87, G-87, F-87, E-87, D-87, C-87, Bb-88, A-88, G-88, F-88, E-88, D-88, C-88, Bb-89, A-89, G-89, F-89, E-89, D-89, C-89, Bb-90, A-90, G-90, F-90, E-90, D-90, C-90, Bb-91, A-91, G-91, F-91, E-91, D-91, C-91, Bb-92, A-92, G-92, F-92, E-92, D-92, C-92, Bb-93, A-93, G-93, F-93, E-93, D-93, C-93, Bb-94, A-94, G-94, F-94, E-94, D-94, C-94, Bb-95, A-95, G-95, F-95, E-95, D-95, C-95, Bb-96, A-96, G-96, F-96, E-96, D-96, C-96, Bb-97, A-97, G-97, F-97, E-97, D-97, C-97, Bb-98, A-98, G-98, F-98, E-98, D-98, C-98, Bb-99, A-99, G-99, F-99, E-99, D-99, C-99, Bb-100, A-100, G-100, F-100, E-100, D-100, C-100, Bb-101, A-101, G-101, F-101, E-101, D-101, C-101, Bb-102, A-102, G-102, F-102, E-102, D-102, C-102, Bb-103, A-103, G-103, F-103, E-103, D-103, C-103, Bb-104, A-104, G-104, F-104, E-104, D-104, C-104, Bb-105, A-105, G-105, F-105, E-105, D-105, C-105, Bb-106, A-106, G-106, F-106, E-106, D-106, C-106, Bb-107, A-107, G-107, F-107, E-107, D-107, C-107, Bb-108, A-108, G-108, F-108, E-108, D-108, C-108, Bb-109, A-109, G-109, F-109, E-109, D-109, C-109, Bb-110, A-110, G-110, F-110, E-11

Musical notation for the bass line of 'The Rose Tree'. The melody is written on a single staff with a bass clef. It begins with a quarter note G2, followed by a quarter note A2, and a quarter note B2. The next measure contains a half note C3. The melody then continues with a quarter note D3, a quarter note E3, and a quarter note F3. The final measure consists of a half note G3. The notation includes various musical symbols such as stems, beams, and clefs.

Musical notation for the bass line of 'The Rose Tree'. The melody is written in a single staff with a bass clef. It consists of a series of eighth and sixteenth notes, with some beamed sixteenth notes indicating a lively tempo. The key signature has one flat (B-flat), and the time signature is 2/4.

[illegible][illegible]

Musical notation for the bass line of 'The Rose Tree'. The key signature is one flat (B-flat), and the time signature is common time (C). The melody starts with a whole rest, followed by a series of eighth and quarter notes: G2, A2, Bb2, A2, G2, F2, E2, D2, C2, Bb1, A1, G1, F1, E1, D1, C1. The piece ends with a final whole note C1.

[illegible]

Musical notation for the bass line of 'The Rose Tree'. The key signature has one sharp (F#). The melody is written on a single staff with a treble clef. It begins with a quarter note G4, followed by a quarter note A4, and a quarter note B4. A slur covers the next three notes: a quarter note C5, a quarter note D5, and a quarter note E5. This is followed by a quarter note F#5, a quarter note G5, and a quarter note A5. A slur covers the next three notes: a quarter note B5, a quarter note C6, and a quarter note D6. This is followed by a quarter note E6, a quarter note F#6, and a quarter note G6. A slur covers the next three notes: a quarter note A6, a quarter note B6, and a quarter note C7. This is followed by a quarter note D7, a quarter note E7, and a quarter note F#7. A slur covers the next three notes: a quarter note G7, a quarter note A7, and a quarter note B7. This is followed by a quarter note C8, a quarter note D8, and a quarter note E8. The piece ends with a double bar line and a repeat sign.

466



473



481



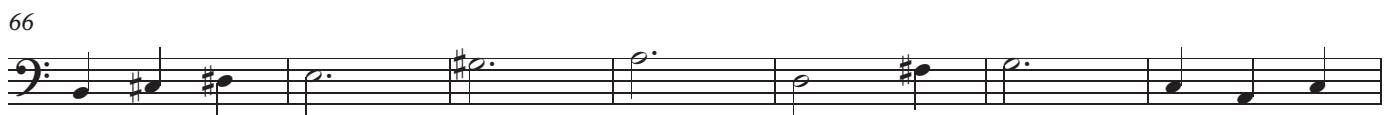
488



493



## Credo

**Allegro**

78 Solo



89

Tutti

Solo

Tutti



98



109

Adagio



117

*p*

125

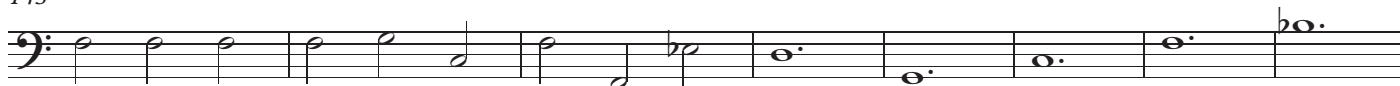
Solo



135



143



151



157



166



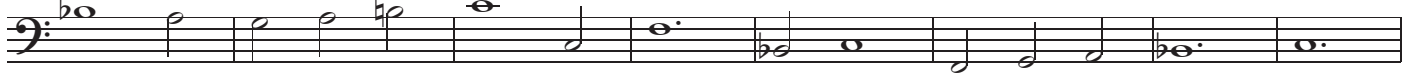
172



179



187



195

203 **Alla breve**

213



223



232



240



**Adagio** **Allegro**

249 Solo



256 **Tutti**



261



266 Solo



271



277



283 Tutti



289 Tutti



295 Tutti



299 **Adagio** *p*





305 **Presto**

311



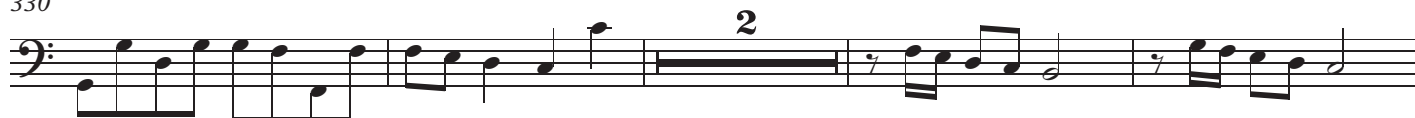
318



324



330



336



# Sanctus

## Adagio



6



## Allegro



18



24



## Andante



40



49



58



67



77



[illegible][illegible]

The bass line of 'The Rose Tree' is written on a single staff in bass clef. It consists of 12 measures. The notes are: G2 (half), A2 (half), B2 (half), C3 (half), D3 (half), E3 (half), F3 (half), G3 (half), A3 (half), B3 (half), C4 (half), and D4 (half). The notes are written as whole notes.

Musical notation for the bass line of 'The Rose Tree'. The key signature has one sharp (F#), and the time signature is 4/4. The melody consists of the following notes: G2, A2, B2, C3, D3, E3, F#3, G3, A3, B3, C4, D4, E4, F#4, G4, A4, B4, C5, D5, E5, F#5, G5, A5, B5, C6, D6, E6, F#6, G6, A6, B6, C7, D7, E7, F#7, G7, A7, B7, C8, D8, E8, F#8, G8, A8, B8, C9, D9, E9, F#9, G9, A9, B9, C10, D10, E10, F#10, G10, A10, B10, C11, D11, E11, F#11, G11, A11, B11, C12, D12, E12, F#12, G12, A12, B12, C13, D13, E13, F#13, G13, A13, B13, C14, D14, E14, F#14, G14, A14, B14, C15, D15, E15, F#15, G15, A15, B15, C16, D16, E16, F#16, G16, A16, B16, C17, D17, E17, F#17, G17, A17, B17, C18, D18, E18, F#18, G18, A18, B18, C19, D19, E19, F#19, G19, A19, B19, C20, D20, E20, F#20, G20, A20, B20, C21, D21, E21, F#21, G21, A21, B21, C22, D22, E22, F#22, G22, A22, B22, C23, D23, E23, F#23, G23, A23, B23, C24, D24, E24, F#24, G24, A24, B24, C25, D25, E25, F#25, G25, A25, B25, C26, D26, E26, F#26, G26, A26, B26, C27, D27, E27, F#27, G27, A27, B27, C28, D28, E28, F#28, G28, A28, B28, C29, D29, E29, F#29, G29, A29, B29, C30, D30, E30, F#30, G30, A30, B30, C31, D31, E31, F#31, G31, A31, B31, C32, D32, E32, F#32, G32, A32, B32, C33, D33, E33, F#33, G33, A33, B33, C34, D34, E34, F#34, G34, A34, B34, C35, D35, E35, F#35, G35, A35, B35, C36, D36, E36, F#36, G36, A36, B36, C37, D37, E37, F#37, G37, A37, B37, C38, D38, E38, F#38, G38, A38, B38, C39, D39, E39, F#39, G39, A39, B39, C40, D40, E40, F#40, G40, A40, B40, C41, D41, E41, F#41, G41, A41, B41, C42, D42, E42, F#42, G42, A42, B42, C43, D43, E43, F#43, G43, A43, B43, C44, D44, E44, F#44, G44, A44, B44, C45, D45, E45, F#45, G45, A45, B45, C46, D46, E46, F#46, G46, A46, B46, C47, D47, E47, F#47, G47, A47, B47, C48, D48, E48, F#48, G48, A48, B48, C49, D49, E49, F#49, G49, A49, B49, C50, D50, E50, F#50, G50, A50, B50, C51, D51, E51, F#51, G51, A51, B51, C52, D52, E52, F#52, G52, A52, B52, C53, D53, E53, F#53, G53, A53, B53, C54, D54, E54, F#54, G54, A54, B54, C55, D55, E55, F#55, G55, A55, B55, C56, D56, E56, F#56, G56, A56, B56, C57, D57, E57, F#57, G57, A57, B57, C58, D58, E58, F#58, G58, A58, B58, C59, D59, E59, F#59, G59, A59, B59, C60, D60, E60, F#60, G60, A60, B60, C61, D61, E61, F#61, G61, A61, B61, C62, D62, E62, F#62, G62, A62, B62, C63, D63, E63, F#63, G63, A63, B63, C64, D64, E64, F#64, G64, A64, B64, C65, D65, E65, F#65, G65, A65, B65, C66, D66, E66, F#66, G66, A66, B66, C67, D67, E67, F#67, G67, A67, B67, C68, D68, E68, F#68, G68, A68, B68, C69, D69, E69, F#69, G69, A69, B69, C70, D70, E70, F#70, G70, A70, B70, C71, D71, E71, F#71, G71, A71, B71, C72, D72, E72, F#72, G72, A72, B72, C73, D73, E73, F#73, G73, A73, B73, C74, D74, E74, F#74, G74, A74, B74, C75, D75, E75, F#75, G75, A75, B75, C76, D76, E76, F#76, G76, A76, B76, C77, D77, E77, F#77, G77, A77, B77, C78, D78, E78, F#78, G78, A78, B78, C79, D79, E79, F#79, G79, A79, B79, C80, D80, E80, F#80, G80, A80, B80, C81, D81, E81, F#81, G81, A81, B81, C82, D82, E82, F#82, G82, A82, B82, C83, D83, E83, F#83, G83, A83, B83, C84, D84, E84, F#84, G84, A84, B84, C85, D85, E85, F#85, G85, A85, B85, C86, D86, E86, F#86, G86, A86, B86, C87, D87, E87, F#87, G87, A87, B87, C88, D88, E88, F#88, G88, A88, B88, C89, D89, E89, F#89, G89, A89, B89, C90, D90, E90, F#90, G90, A90, B90, C91, D91, E91, F#91, G91, A91, B91, C92, D92, E92, F#92, G92, A92, B92, C93, D93, E93, F#93, G93, A93, B93, C94, D94, E94, F#94, G94, A94, B94, C95, D95, E95, F#95, G95, A95, B95, C96, D96, E96, F#96, G96, A96, B96, C97, D97, E97, F#97, G97, A97, B97, C98, D98, E98, F#98, G98, A98, B98, C99, D99, E99, F#99, G99, A99, B99, C100, D100, E100, F#100, G100, A100, B100, C101, D101, E101, F#101, G101, A101, B101, C102, D102, E102, F#102, G102, A102, B102, C103, D103, E103, F#103, G103, A103, B103, C104, D104, E104, F#104, G104, A104, B104, C105, D105, E105, F#105, G105, A105, B105, C106, D106, E106, F#106, G106, A106, B106, C107, D107, E107, F#107, G107, A107, B107, C108, D108, E108, F#108, G108, A108, B108, C109, D109, E109, F#109, G109, A109, B109, C110, D110, E110, F#110, G110, A110, B110, C111, D111, E111, F#111, G111, A111, B111, C112, D112, E112, F#112, G112, A112, B112, C113, D113, E113, F#113, G113, A113, B113, C114, D114, E114, F#114, G114, A114, B114, C115, D115, E115, F#115, G115, A115, B115, C116, D116, E116, F#116, G116, A116, B116, C117, D117, E117, F#117, G117, A117, B117, C118, D118, E118, F#118, G118, A118, B118, C119, D119, E119, F#119, G119, A119, B119, C120, D120, E120, F#120, G120, A120, B120, C121, D121, E121, F#121, G121, A121, B121, C122, D122, E122, F#122, G122, A122, B122, C123, D123, E123, F#123, G123, A123, B123, C124, D124, E124, F#124, G124, A124, B124, C125, D125, E125, F#125, G125, A125, B125, C126, D126, E126, F#126, G126, A126, B126, C127, D127, E127, F#127, G127, A127, B127, C128, D128, E128, F#128, G128, A128, B128, C129, D129, E129, F#129, G129, A129, B129, C130, D130, E130, F#130, G130, A130, B130, C131, D131, E131, F#131, G131, A131, B131, C132, D132, E132, F#132, G132, A132, B132, C133, D133, E133, F#133, G133, A133, B133, C134, D134, E134, F#134, G134, A134, B134, C

Musical notation for the bass line of 'The Rose Tree'. The key signature has one sharp (F#). The melody consists of the following notes: G2, A2, B2, C3, D3, E3, F#3, G3, A3, B3, C4, D4, E4, F#4, G4, A4, B4, C5, D5, E5, F#5, G5, A5, B5, C6, D6, E6, F#6, G6, A6, B6, C7, D7, E7, F#7, G7, A7, B7, C8, D8, E8, F#8, G8, A8, B8, C9, D9, E9, F#9, G9, A9, B9, C10, D10, E10, F#10, G10, A10, B10, C11, D11, E11, F#11, G11, A11, B11, C12, D12, E12, F#12, G12, A12, B12, C13, D13, E13, F#13, G13, A13, B13, C14, D14, E14, F#14, G14, A14, B14, C15, D15, E15, F#15, G15, A15, B15, C16, D16, E16, F#16, G16, A16, B16, C17, D17, E17, F#17, G17, A17, B17, C18, D18, E18, F#18, G18, A18, B18, C19, D19, E19, F#19, G19, A19, B19, C20, D20, E20, F#20, G20, A20, B20, C21, D21, E21, F#21, G21, A21, B21, C22, D22, E22, F#22, G22, A22, B22, C23, D23, E23, F#23, G23, A23, B23, C24, D24, E24, F#24, G24, A24, B24, C25, D25, E25, F#25, G25, A25, B25, C26, D26, E26, F#26, G26, A26, B26, C27, D27, E27, F#27, G27, A27, B27, C28, D28, E28, F#28, G28, A28, B28, C29, D29, E29, F#29, G29, A29, B29, C30, D30, E30, F#30, G30, A30, B30, C31, D31, E31, F#31, G31, A31, B31, C32, D32, E32, F#32, G32, A32, B32, C33, D33, E33, F#33, G33, A33, B33, C34, D34, E34, F#34, G34, A34, B34, C35, D35, E35, F#35, G35, A35, B35, C36, D36, E36, F#36, G36, A36, B36, C37, D37, E37, F#37, G37, A37, B37, C38, D38, E38, F#38, G38, A38, B38, C39, D39, E39, F#39, G39, A39, B39, C40, D40, E40, F#40, G40, A40, B40, C41, D41, E41, F#41, G41, A41, B41, C42, D42, E42, F#42, G42, A42, B42, C43, D43, E43, F#43, G43, A43, B43, C44, D44, E44, F#44, G44, A44, B44, C45, D45, E45, F#45, G45, A45, B45, C46, D46, E46, F#46, G46, A46, B46, C47, D47, E47, F#47, G47, A47, B47, C48, D48, E48, F#48, G48, A48, B48, C49, D49, E49, F#49, G49, A49, B49, C50, D50, E50, F#50, G50, A50, B50, C51, D51, E51, F#51, G51, A51, B51, C52, D52, E52, F#52, G52, A52, B52, C53, D53, E53, F#53, G53, A53, B53, C54, D54, E54, F#54, G54, A54, B54, C55, D55, E55, F#55, G55, A55, B55, C56, D56, E56, F#56, G56, A56, B56, C57, D57, E57, F#57, G57, A57, B57, C58, D58, E58, F#58, G58, A58, B58, C59, D59, E59, F#59, G59, A59, B59, C60, D60, E60, F#60, G60, A60, B60, C61, D61, E61, F#61, G61, A61, B61, C62, D62, E62, F#62, G62, A62, B62, C63, D63, E63, F#63, G63, A63, B63, C64, D64, E64, F#64, G64, A64, B64, C65, D65, E65, F#65, G65, A65, B65, C66, D66, E66, F#66, G66, A66, B66, C67, D67, E67, F#67, G67, A67, B67, C68, D68, E68, F#68, G68, A68, B68, C69, D69, E69, F#69, G69, A69, B69, C70, D70, E70, F#70, G70, A70, B70, C71, D71, E71, F#71, G71, A71, B71, C72, D72, E72, F#72, G72, A72, B72, C73, D73, E73, F#73, G73, A73, B73, C74, D74, E74, F#74, G74, A74, B74, C75, D75, E75, F#75, G75, A75, B75, C76, D76, E76, F#76, G76, A76, B76, C77, D77, E77, F#77, G77, A77, B77, C78, D78, E78, F#78, G78, A78, B78, C79, D79, E79, F#79, G79, A79, B79, C80, D80, E80, F#80, G80, A80, B80, C81, D81, E81, F#81, G81, A81, B81, C82, D82, E82, F#82, G82, A82, B82, C83, D83, E83, F#83, G83, A83, B83, C84, D84, E84, F#84, G84, A84, B84, C85, D85, E85, F#85, G85, A85, B85, C86, D86, E86, F#86, G86, A86, B86, C87, D87, E87, F#87, G87, A87, B87, C88, D88, E88, F#88, G88, A88, B88, C89, D89, E89, F#89, G89, A89, B89, C90, D90, E90, F#90, G90, A90, B90, C91, D91, E91, F#91, G91, A91, B91, C92, D92, E92, F#92, G92, A92, B92, C93, D93, E93, F#93, G93, A93, B93, C94, D94, E94, F#94, G94, A94, B94, C95, D95, E95, F#95, G95, A95, B95, C96, D96, E96, F#96, G96, A96, B96, C97, D97, E97, F#97, G97, A97, B97, C98, D98, E98, F#98, G98, A98, B98, C99, D99, E99, F#99, G99, A99, B99, C100, D100, E100, F#100, G100, A100, B100, C101, D101, E101, F#101, G101, A101, B101, C102, D102, E102, F#102, G102, A102, B102, C103, D103, E103, F#103, G103, A103, B103, C104, D104, E104, F#104, G104, A104, B104, C105, D105, E105, F#105, G105, A105, B105, C106, D106, E106, F#106, G106, A106, B106, C107, D107, E107, F#107, G107, A107, B107, C108, D108, E108, F#108, G108, A108, B108, C109, D109, E109, F#109, G109, A109, B109, C110, D110, E110, F#110, G110, A110, B110, C111, D111, E111, F#111, G111, A111, B111, C112, D112, E112, F#112, G112, A112, B112, C113, D113, E113, F#113, G113, A113, B113, C114, D114, E114, F#114, G114, A114, B114, C115, D115, E115, F#115, G115, A115, B115, C116, D116, E116, F#116, G116, A116, B116, C117, D117, E117, F#117, G117, A117, B117, C118, D118, E118, F#118, G118, A118, B118, C119, D119, E119, F#119, G119, A119, B119, C120, D120, E120, F#120, G120, A120, B120, C121, D121, E121, F#121, G121, A121, B121, C122, D122, E122, F#122, G122, A122, B122, C123, D123, E123, F#123, G123, A123, B123, C124, D124, E124, F#124, G124, A124, B124, C125, D125, E125, F#125, G125, A125, B125, C126, D126, E126, F#126, G126, A126, B126, C127, D127, E127, F#127, G127, A127, B127, C128, D128, E128, F#128, G128, A128, B128, C129, D129, E129, F#129, G129, A129, B129, C130, D130, E130, F#130, G130, A130, B130, C131, D131, E131, F#131, G131, A131, B131, C132, D132, E132, F#132, G132, A132, B132, C133, D133, E133, F#133, G133, A133, B133, C134, D134, E134, F#134, G134, A134, B134, C135, D135, E

128

# Agnus

## Adagio staccato



6



11



16



21



26



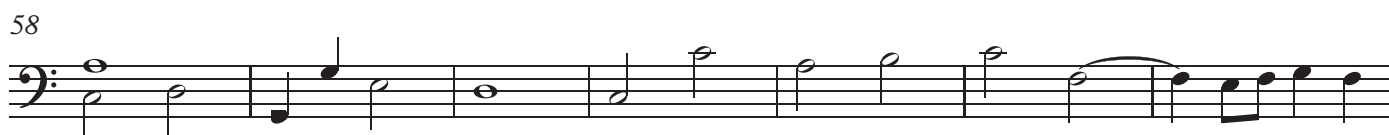
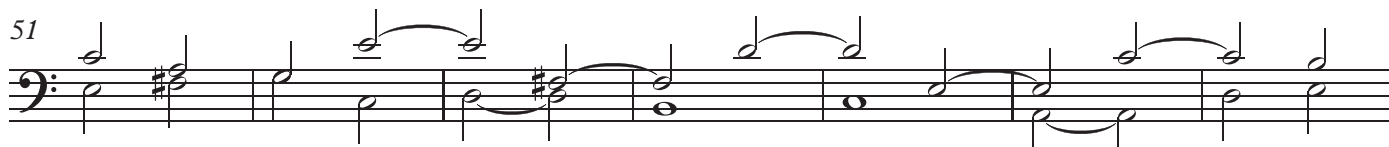
31



36

## Alla breve





124



131



139



146



160



167



175



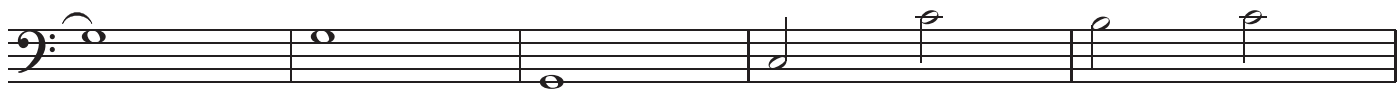
188



196

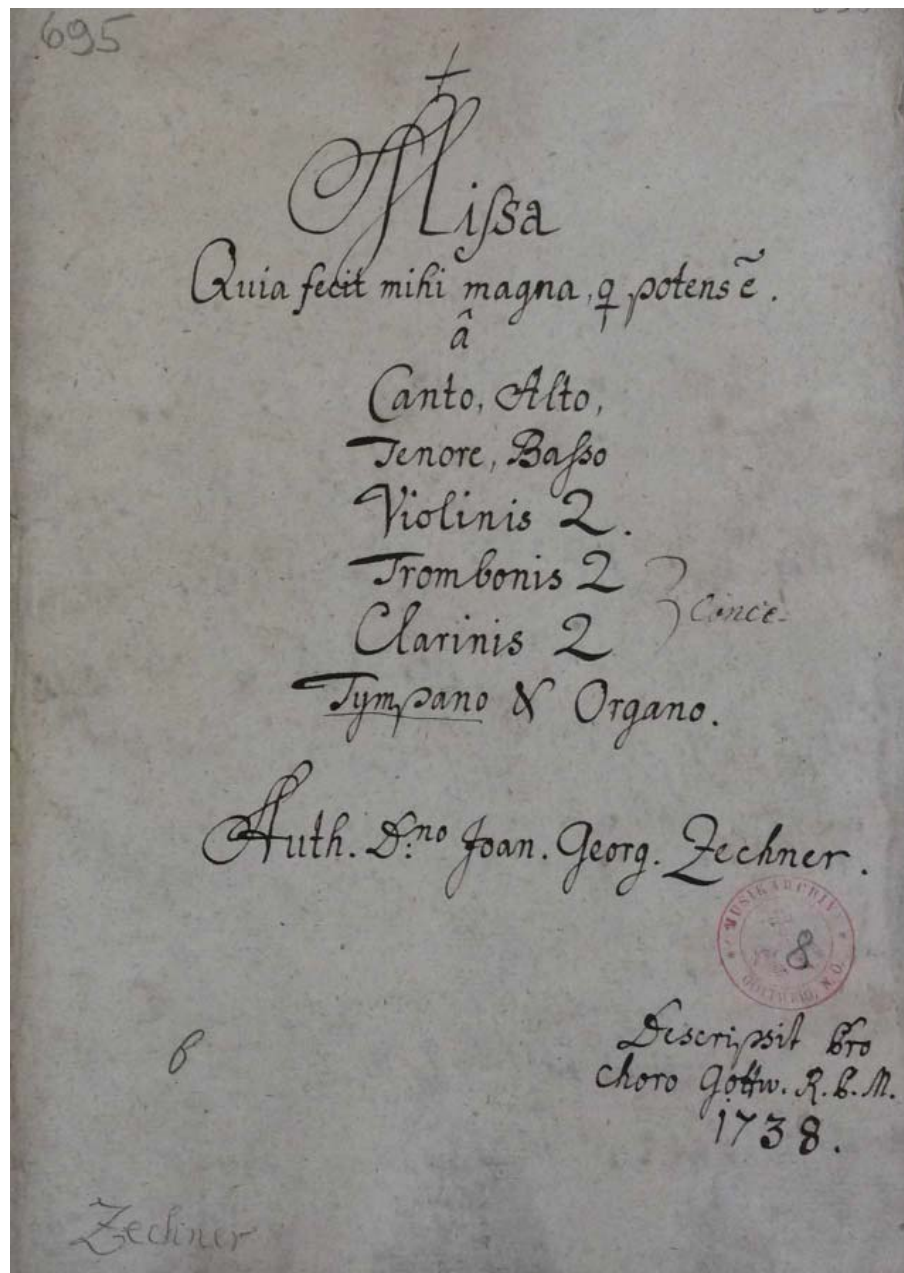


205



210





Die vorliegende Messe von Johann Georg Zechner (1716-1778) trägt den Untertitel „**Quia fecit mihi magna, qui potens est**“, ein Zitat aus dem Lukasevangelium: „Denn er hat große Dinge an mir getan, der da mächtig ist“.

Begonnen wurde die Übertragung von Peter Unger im März 2018, nachdem bereits 2016 von Christian Schleicher und Werner Deutsch die alten Abschriften von 1736 für das Stift Göttweig fotografiert wurden. Fertiggestellt wurden die Arbeiten im April 2019.

Herzlichen Dank an Josef Hofer, Franz Zebinger und Werner Deutsch für das Korrekturlesen.



