



Violone

Johann Georg Zechner (1716-1778)

Requiem in c

a Canto, Alto, Tenore, Basso,
Violinis (2), Clarini (2), Tromboni (2), Tympano
con Organo

Introitus

Adagio



Requiem aeternam

5



9



14



Te decet hymnus

20



26



32



38

Adagio



44

Exaudi



51

Allegro



Kyrie

58



70



76 Musical staff with bass clef, key signature of two flats, and a triplet of eighth notes.

85 Musical staff with bass clef, key signature of two flats, and a melodic line.

91 Musical staff with bass clef, key signature of two flats, and a melodic line.

97 Musical staff with bass clef, key signature of two flats, and a melodic line.

103 Musical staff with bass clef, key signature of two flats, and a melodic line.

109 Musical staff with bass clef, key signature of two flats, and a melodic line.

112 **Adagio** Musical staff with bass clef, key signature of two flats, and a melodic line.

117 **Adagio** **Sequenz** Musical staff with bass clef, key signature of two flats, and a melodic line.

Dies irae

121 Musical staff with bass clef, key signature of two flats, and a melodic line.

125 Musical staff with bass clef, key signature of two flats, and a melodic line.

Requiem in c - Johann Georg Zechner

128



132



137



140



143



147



151



157



163



167



170



174



178



Allegro

Huic ergo

184



189

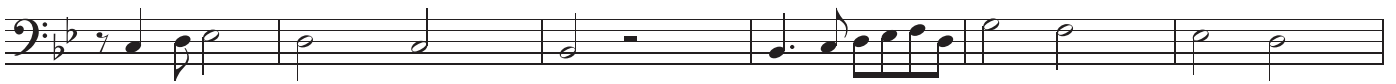


195

Adagio 5 Allegro



205



211



217

Adagio



221



Offertorium

226 Adagio

Allegro



232

Adagio



Libera animas

237



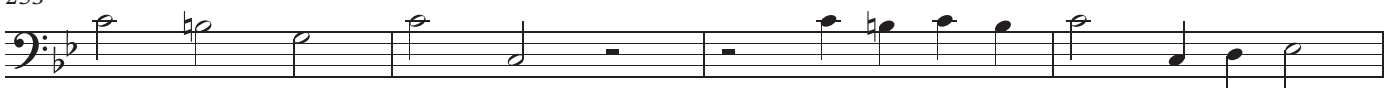
243



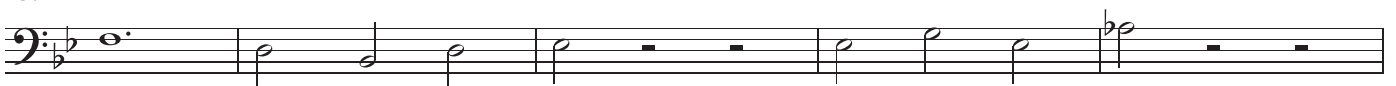
248



253



257



Requiem in c - Johann Georg Zechner

262



268



275



281



286



291



297



303



309



315



321 **Alla breve**

12

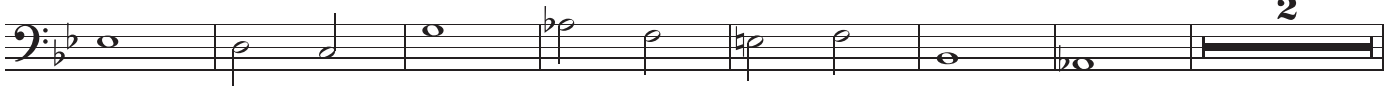


Quam olim Abrahae

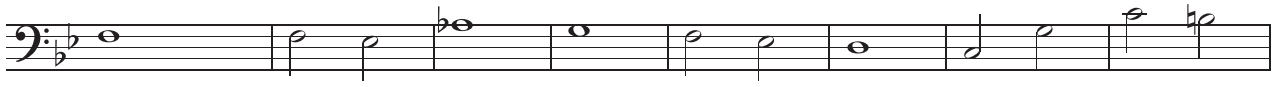
339



348



357



365



379



388

(fine) **Andante**



Hostias et preces

394



397



400



403



406



409



412



415



418



421

Quam olim ut supra



Sanctus

424 **Adagio**



Sanctus

431

Allegro



Pleni sunt caeli

438



444



449



455



461



466



472



478



484 **Andante**



Osanna

489



494



499



504



509



515 **Andante**

Benedictus



519



523



528



532



536



540



544



547

Osanna ut supra



Agnus Dei

550 **Adagio**



Agnus Dei

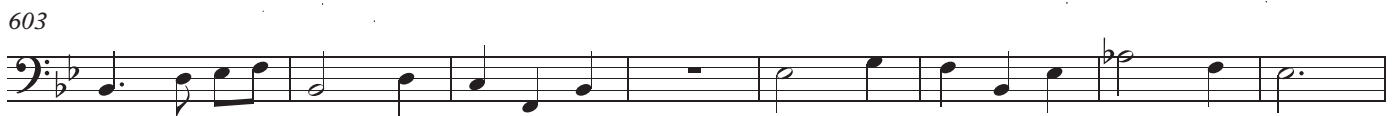


Communio

580 **Allegro**



Lux aeterna



623 **Alla breve**
18

A single musical staff in bass clef with a key signature of two flats (B-flat and E-flat). The time signature is Alla breve. The staff contains measures 623 through 647. Measure 623 is a whole rest. Measures 624-627 contain whole notes. Measures 628-631 contain quarter notes. Measures 632-635 contain eighth notes. Measures 636-639 contain quarter notes. Measures 640-643 contain eighth notes. Measures 644-647 contain quarter notes.

Cum sanctis tuis

648

A single musical staff in bass clef with a key signature of two flats. The staff contains measures 648 through 654. Measures 648-651 contain quarter notes. Measures 652-654 contain eighth notes.

655

A single musical staff in bass clef with a key signature of two flats. The staff contains measures 655 through 662. Measures 655-658 contain quarter notes. Measures 659-662 contain eighth notes.

663

5

A single musical staff in bass clef with a key signature of two flats. The staff contains measures 663 through 674. Measure 663 is a whole rest. Measures 664-667 contain whole notes. Measures 668-674 contain quarter notes.

675

A single musical staff in bass clef with a key signature of two flats. The staff contains measures 675 through 683. Measures 675-678 contain quarter notes. Measures 679-683 contain eighth notes.

684

A single musical staff in bass clef with a key signature of two flats. The staff contains measures 684 through 692. Measures 684-687 contain whole notes. Measures 688-692 contain quarter notes.

693 (fine) **Adagio**

A single musical staff in bass clef with a key signature of two flats. The staff contains measures 693 through 701. Measures 693-696 contain quarter notes. Measures 697-701 contain eighth notes.

Requiem

698 **Cum sanctis ut supra**

A single musical staff in bass clef with a key signature of two flats. The staff contains measures 698 through 706. Measures 698-701 contain quarter notes. Measures 702-706 contain eighth notes.

Ad: pianissimo **Oratio**

Quiem

ad: A:

Marie

The image shows a page of handwritten musical notation on aged paper. At the top, the word 'Oratio' is written in a large, decorative script. Below it, the word 'Quiem' is written in a similar style. The music is written on ten staves. The first staff begins with a treble clef and a key signature of one flat. The notation includes various rhythmic values, accidentals, and dynamic markings such as 'pianissimo' and 'ad: A:'. The word 'Marie' is written at the bottom of the page. The handwriting is in dark ink, and the paper shows signs of age with some staining.

Eigenverlag der „Johann Georg Zechner Gesellschaft Gleisdorf“, 8200 Gleisdorf, Rathausplatz 1
 Spartiert von Peter Unger, +43 (664) 1009288, aus Unterlagen des Stiftes Lambach; Nr.: 1209, im Jahre 2022.
 Ausarbeitung der Organo-Stimme und Generalbassaussetzung Franz Zebinger (2023)

Ausgabe 2023-10 Alle Rechte vorbehalten.